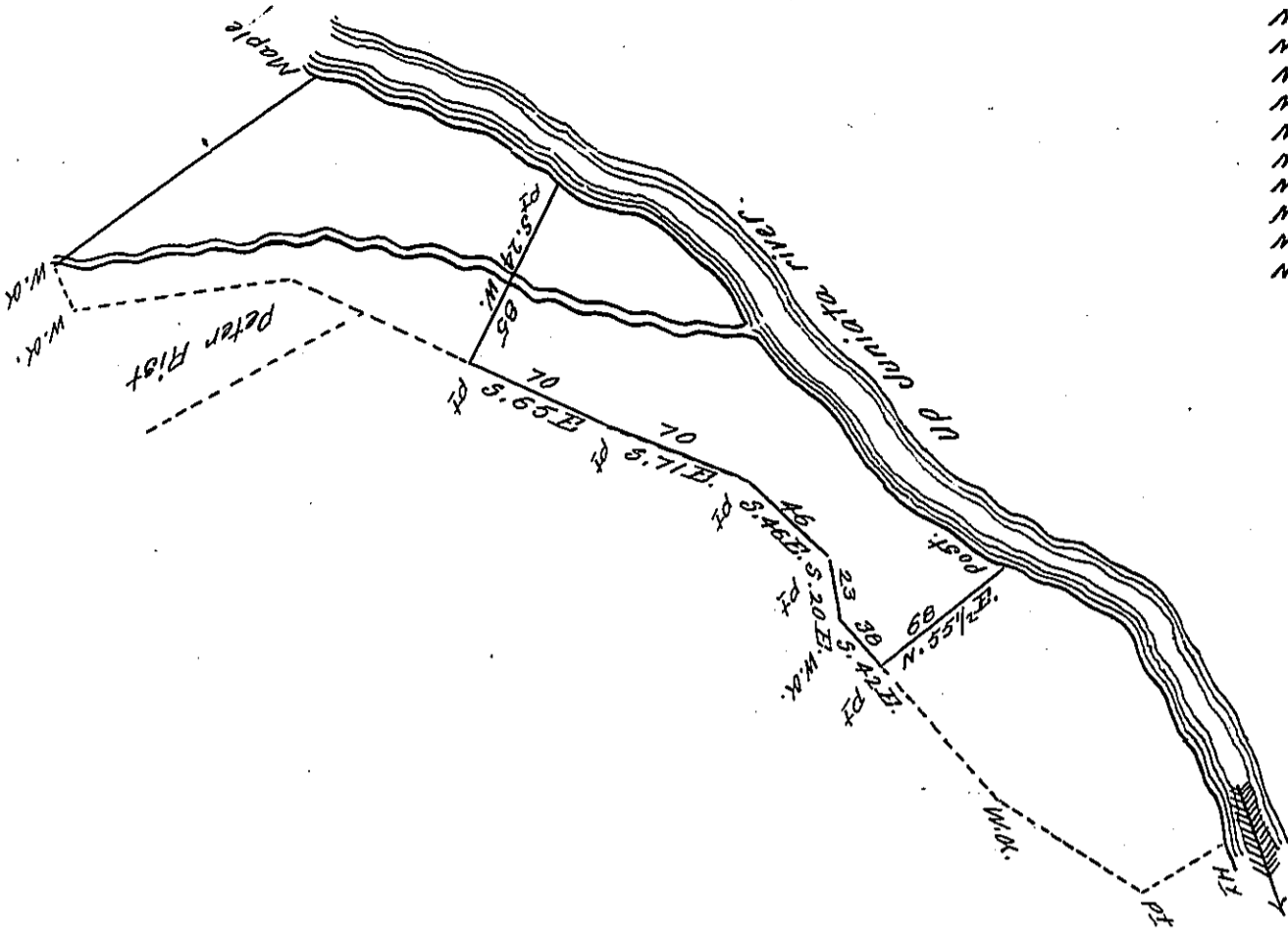


The Courses & Distances up the river from the Pt at the Letter A. to the Pt at the Letter B.

- N. 88 W. 14
- N. 73 W. 15
- N. 59 W. 36
- N. 45 W. 56
- N. 52 W. 20
- N. 41 W. 20
- N. 33 W. 12
- N. 38 1/2 W. 27.6
- N. 37 W. 46
- N. 69 W. 41 Pt at B



Situate opposit- the Borough of Huntingdon in Porter Township
 Huntingdon County Containing Eighty one acres 83 perches & allowance
 of six per cent for roads &c. Being part of a Tract of Land Containing
 219^{Ac} 59^P Surveyed the 20th of November 1794, In pursuance of a Warrant
 granted to Samuel Nivens Dated the 5th day of June 1762 This part resurve-
 yed & divided from the residue of said tract the 15th day of November—
 1831.

Wm Reed D.S.

Jacob Spangler Esq^r
 Surveyor General.

IN TESTIMONY that the above is a copy of the original remaining on file in
 the Department of Internal Affairs of Pennsylvania, made
 conformably to an Act of Assembly approved the 16th day of
 February, 1833, I have hereunto set my Hand and caused
 the Seal of said Department to be affixed at Harrisburg,
 this twenty-first day of May 1906.

Luca D. Brown
 Secretary of Internal Affairs.